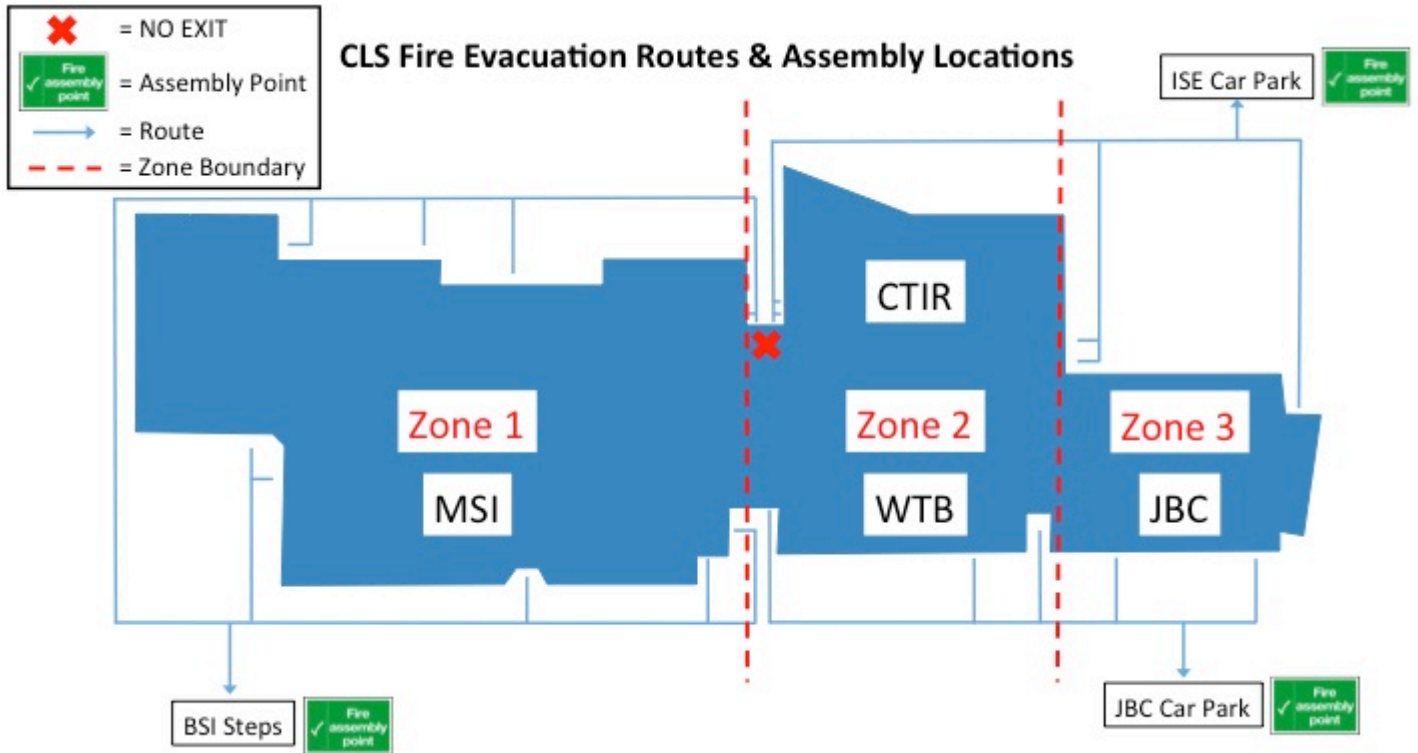


CLS Fire Alarm System Changes Resulting from CTIR being Built

The College now has three fire alarm zones as shown below. These are:

- MSI
- WTB/CTIR
- JBC



Activation of the fire alarm (continuous alarm) in one building causes the immediately adjacent building(s) to go into alert (pulsed alarm), thus:

- | | | |
|---------------------|----|-----------------|
| MSI activation | -> | WTB/CTIR alert |
| WTB/CTIR activation | -> | MSI & JBC alert |
| JBC activation | -> | WTB/CTIR alert |

When the system was redesigned to incorporate CTIR, two options were possible due to the new arrangement of the buildings, which caused the removal of the previously existing intermediate zones (WTB atrium and WTB/JBC stairwell):

- Option 1 was a simple “one out, all out”
- Option 2 was the current system

Hence, the current fire alarm process is the result of the arrangement of the buildings and the open nature of the connections between them. Without sufficient fire separation, an arrangement whereby buildings adjacent to an activation remained without some form of alert was not possible.